



mcOTA

Over The Air mcOS Updater

Revision 1.2.20 | March 3 2017

mcOTA is a product of mc-Things Inc.



1. mcOS Update

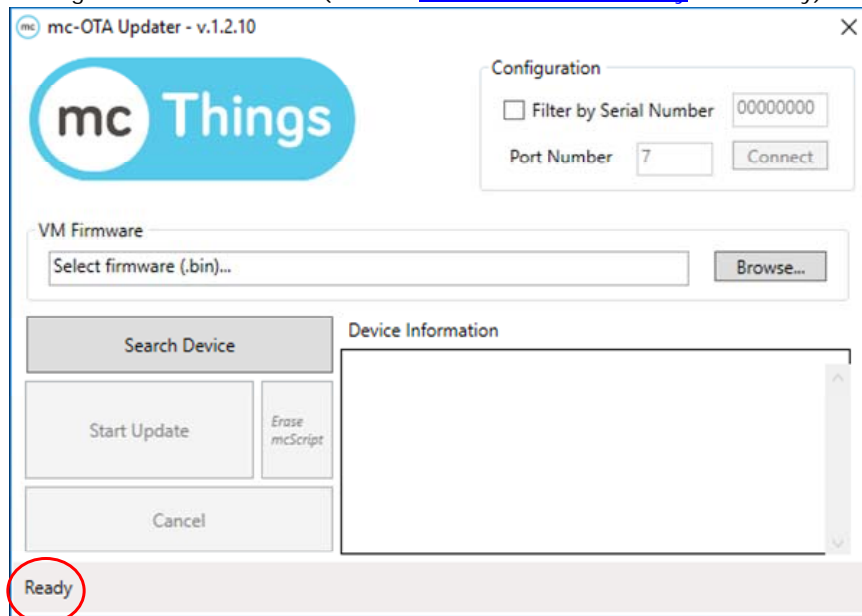
1. Download and Install mcOTA application from (<https://www.mcthings.com/products/mcota/>).
2. Download the latest version of the mcOS for your specific module/device from (<https://www.mcthings.com/products/>)
3. Plug the mc-Dongle into a USB port. Wait until the USB driver installation is done.

Windows should automatically detect and install the appropriate drivers. If not, download the correct drivers here (http://www.ftdichip.com/Drivers/CDM/CDM21216_Setup.exe).

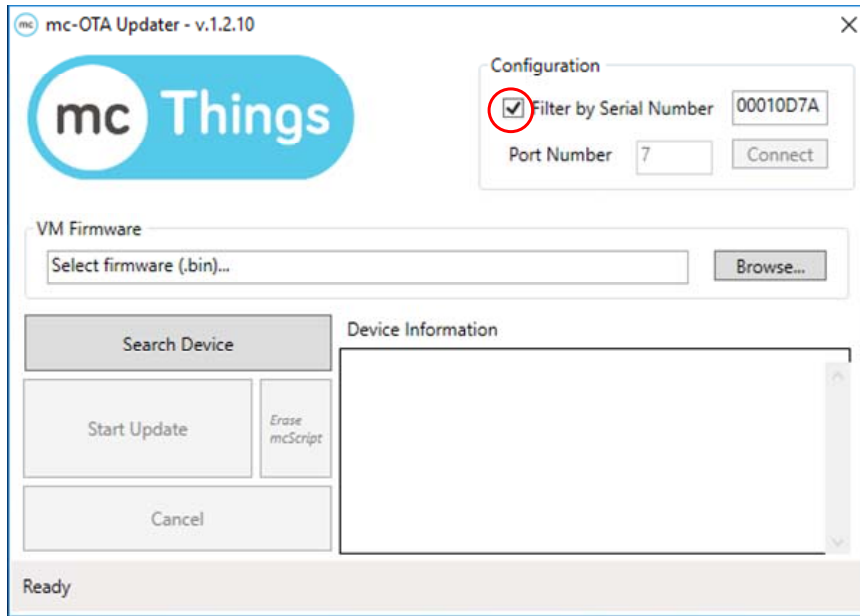
Warning: This step must be done before launching the mcOTA application.



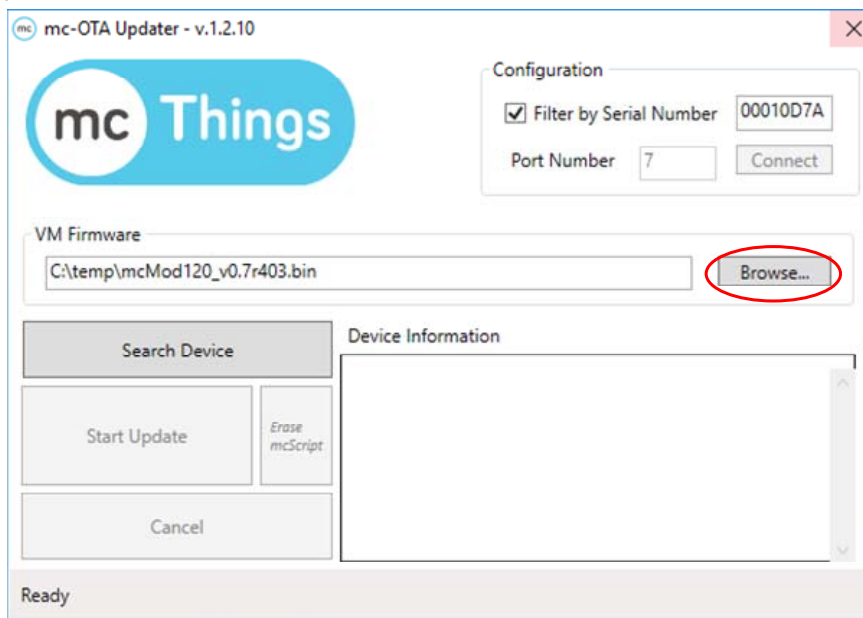
4. Launch mcOTA application. The software automatically searches for the mcDongle-Bootloader device. If the mcDongle-Bootloader device is found, it will say "Ready". If the mcDongle-Bootloader is not found, it will say "No mcDongle-Bootloader found". (refer to [Manual Comm Port Entry](#) for remedy)



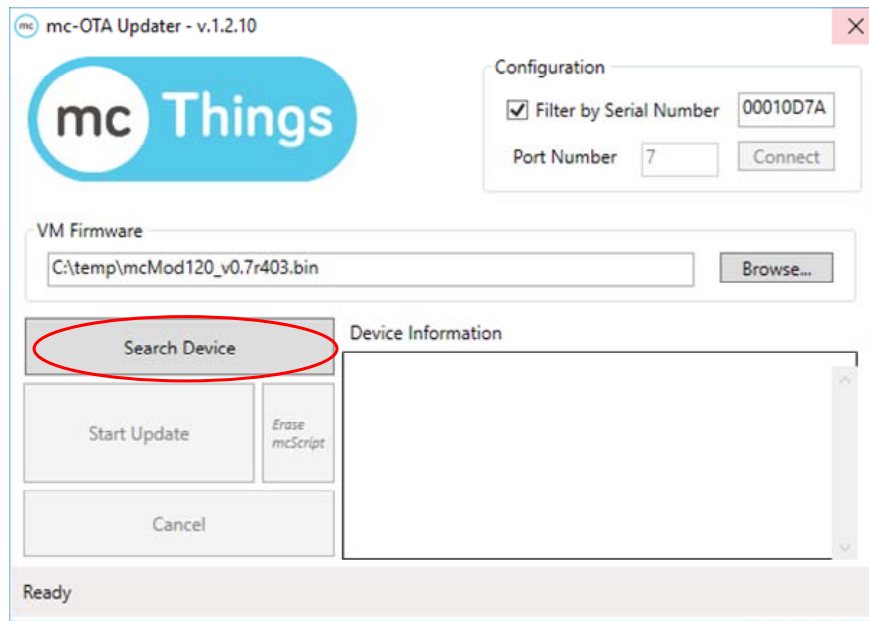
- 5. Under 'Serial Number', click the 'Filter by Serial Number' checkbox and enter the 8-character hexadecimal value serial number found on a sticker on the device. You can also leave it as a wild card ("00000000") to detect any compatible device automatically. (Note: If multiple devices are powered, it will connect to the lowest value serial number).



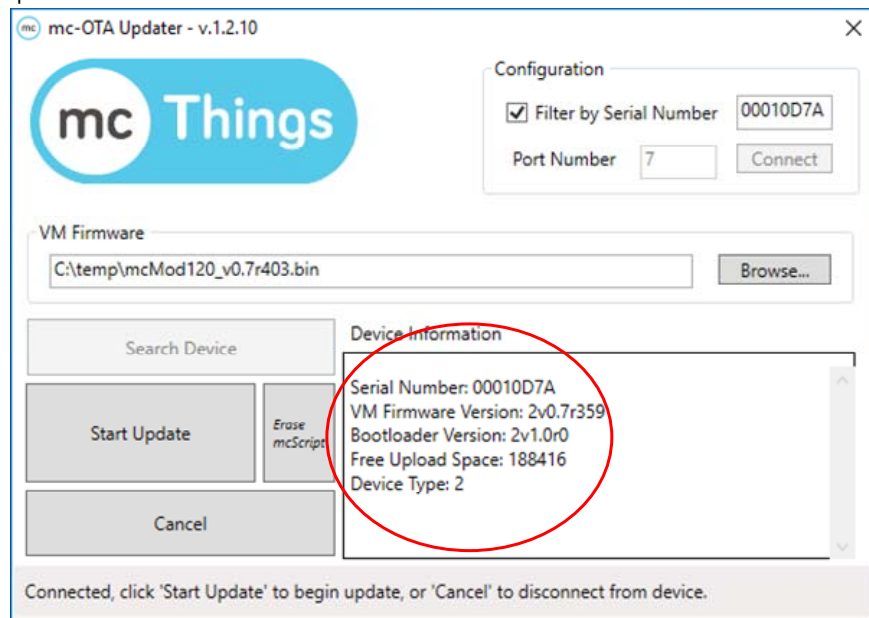
- 6. Browse and locate the desired mcOS version for the module/device you are updating. The file format must be a *.bin file.



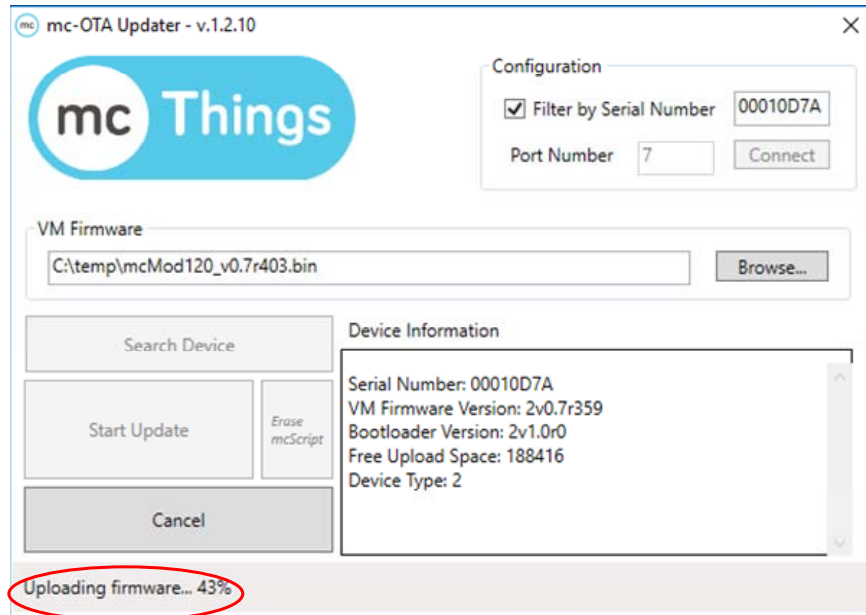
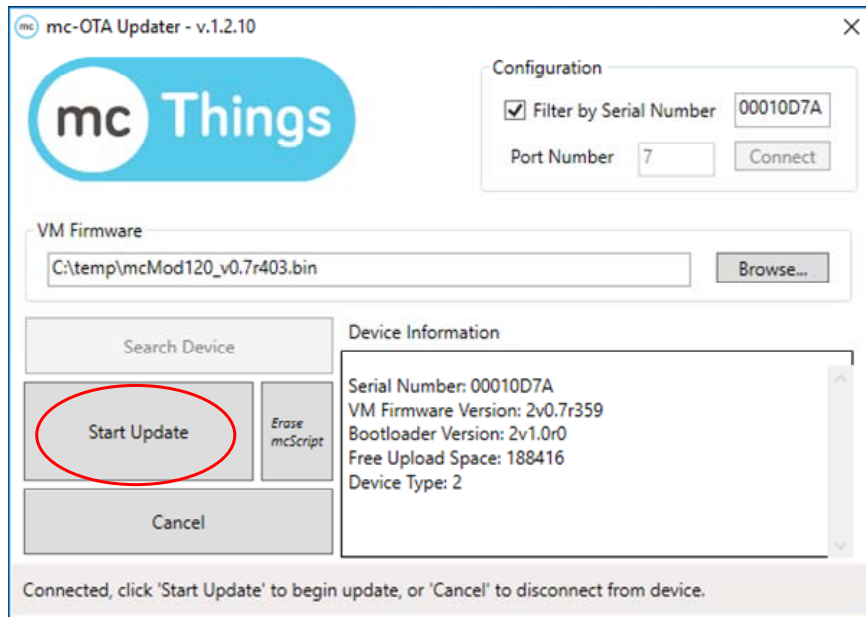
- 7. Ensure the device that you want to load is powered off and click "Search Device" for the program to scan for the specified device.



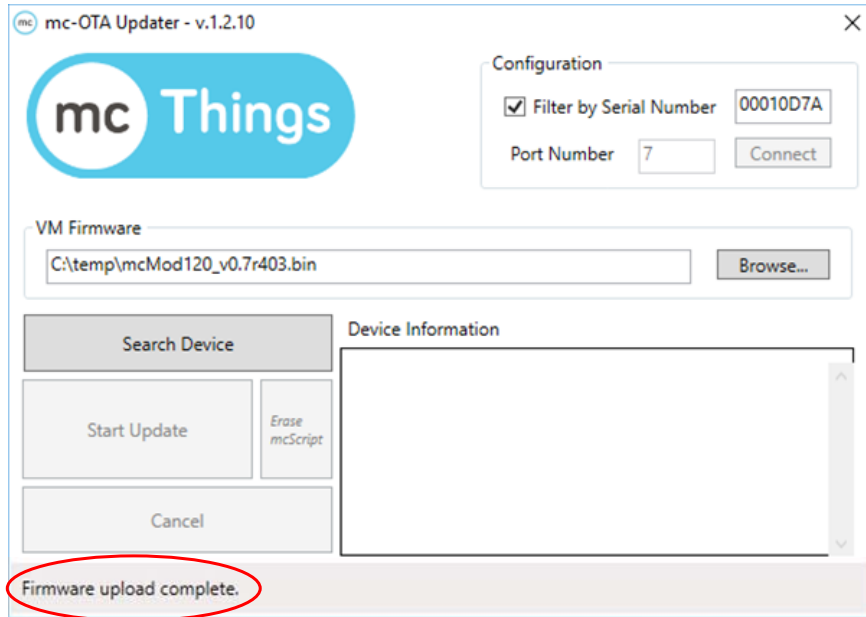
- 8. Power cycle the device that has to be updated to put it into the bootloader mode. Bootloader mode will stay for 5 Seconds after power cycling. If mcOTA Updater has found a compatible device, "Start Update", "Erase mcScript" and "Cancel" button will be Enabled and device information will be shown.



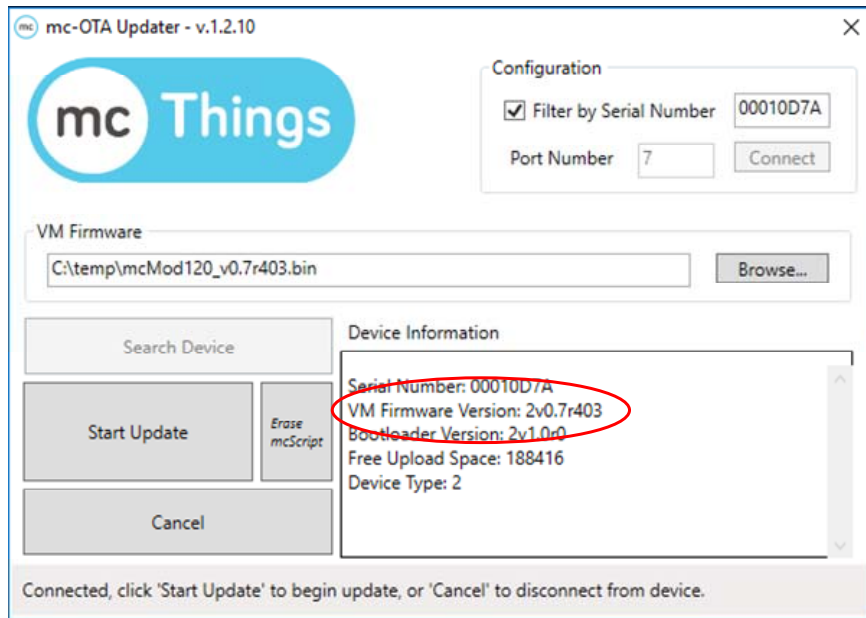
- 9. Click "Start Update" to initiate the mcOS update. The progress information will be displayed at the bottom of the window.



10. When update has finished the Device automatically disconnects and runs the new version of mcOS.



11. You can double check if the device has the desired version of mcOS by putting the mcOTA application to "Search Device" mode again and power cycle the device. When it detects the device again it will re-populate the updated Device information.

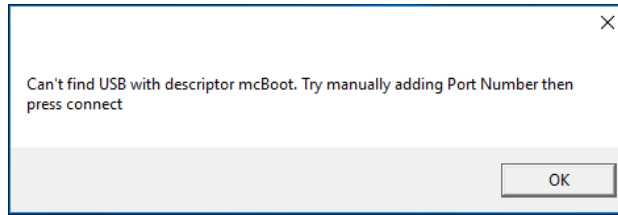


NOTE: A power cycle is needed to quickly get it out from the bootloader mode and back to normal mode. Else the device will automatically go back to normal mode after 2 mins of no bootloader activity.

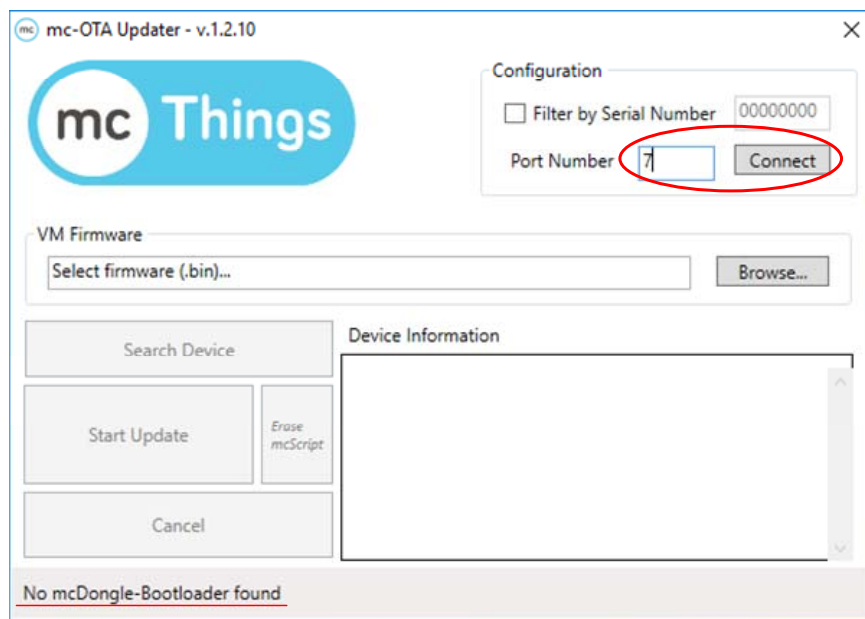
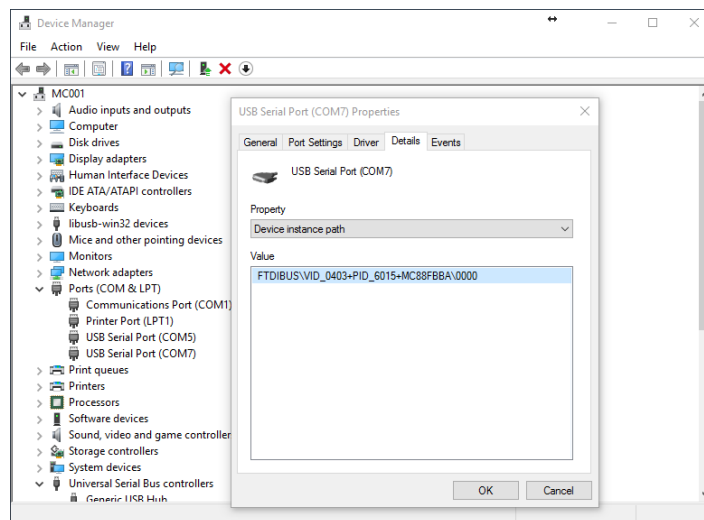


2. Manual Comm. Port Entry

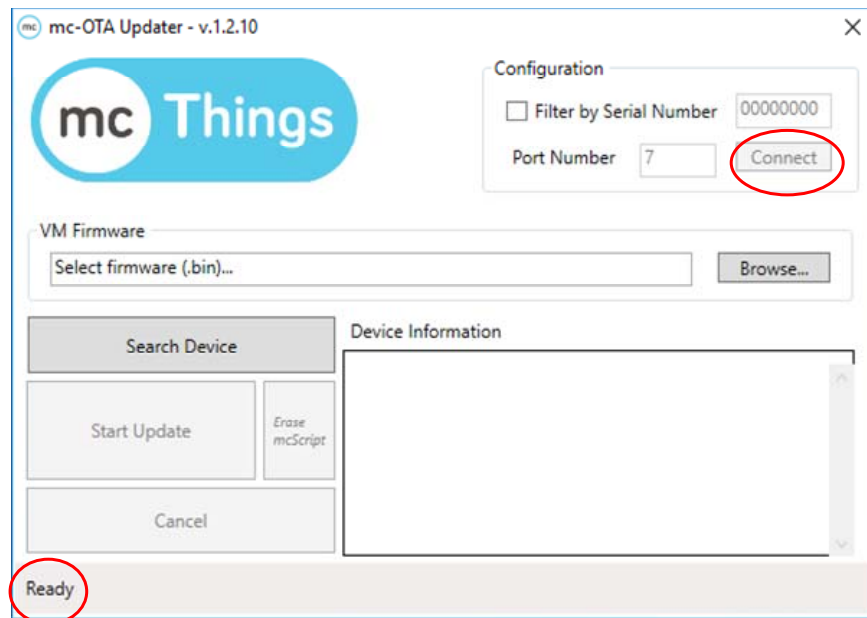
On rare cases and for some reason the mcOTAUpdater would not be able to automatically detect and connect to the mcDongle. In this case we can try and manually enter the correct comm. port number.



1. Determine and enter the correct Communication Port where mcDongle-mcBoot has been enumerated into. The easiest way is to observe which USB Serial Port comes up when you plug in mcDongle to the host PC.

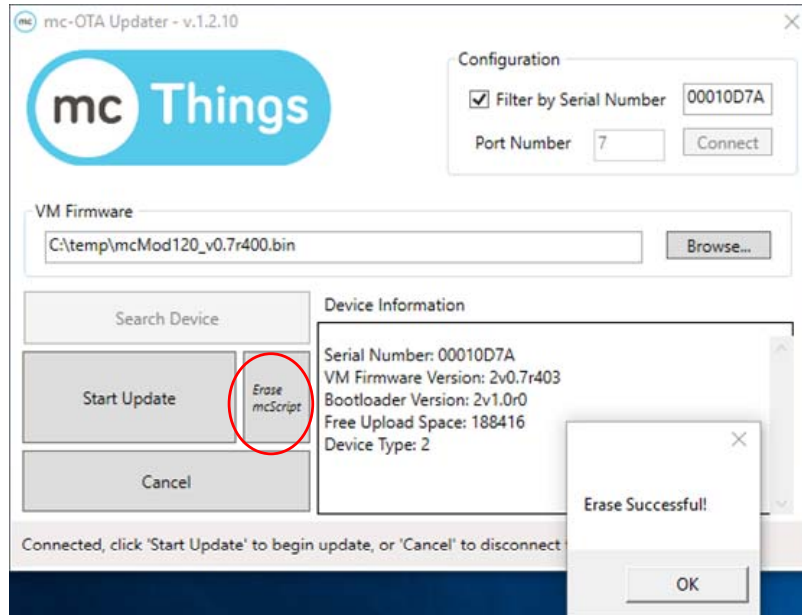


- When the mcOTA application successfully connect to an mcDongle with the correct firmware on it, the status tab should show "Ready".



3. Erase mcScript

The "Erase mcScript" button is used to forcefully clear a script that has been loaded on the device. This is handy if you have loaded a bad script that unfortunately "bricked" the device temporarily.



NOTE: "Erase mcScript" button is enabled when the mcOTA application successfully finds a device in bootloader mode.

